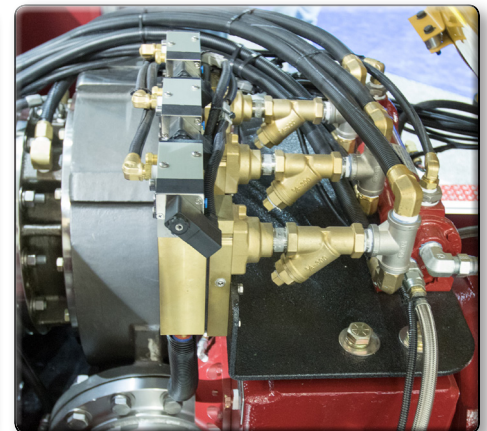
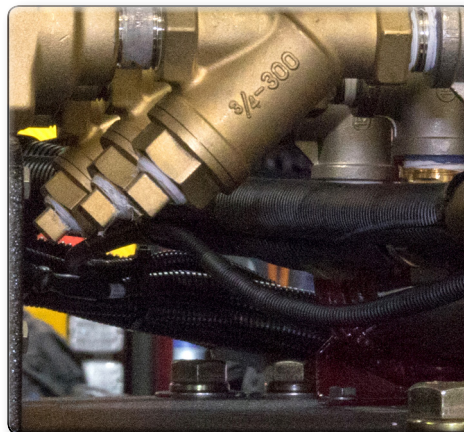
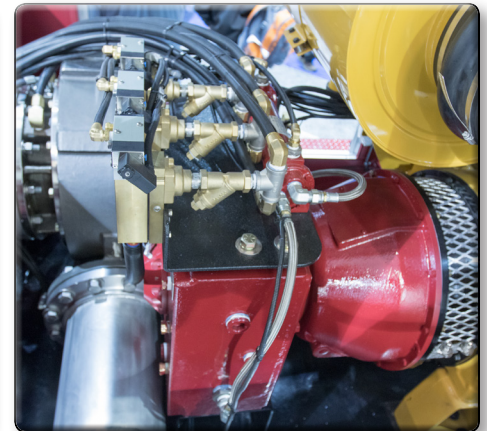
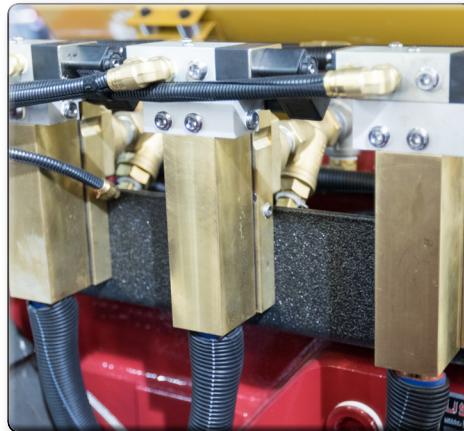


### Part #31.013.42

This system is designed for use with high volume fire pumps having a 3,000 GPM [11,350 LPM] **or greater** capacity. It is comprised of three (3) double barrel primers controlled by a single panel mounted rocker switch that includes a 2" diameter lift gauge.

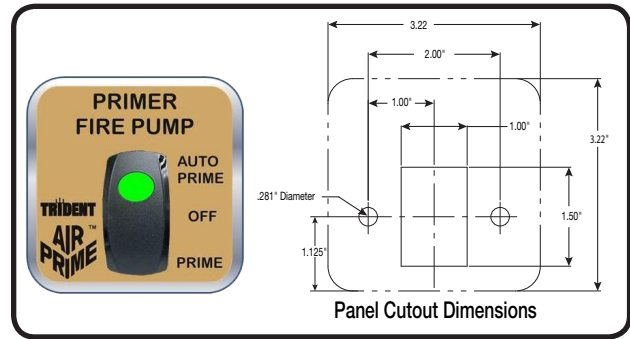
This system requires an air compressor with a **30 CFM** minimum output.



### Part #31.013.44 and #31.013.43

These AirPrime systems are designed for use with high volume fire pumps having **up to** a 3,000 GPM [11,350 LPM] capacity. Each of these model numbers utilizes two (2) double barrel primers controlled by a single panel mounted control. Available with or without a 2" diameter Lift Gauge. These systems require an air compressor with a **20 CFM** minimum output.

#### Part #31.013.44 Without Lift Gauge



#### Part #31.013.43 With Lift Gauge

